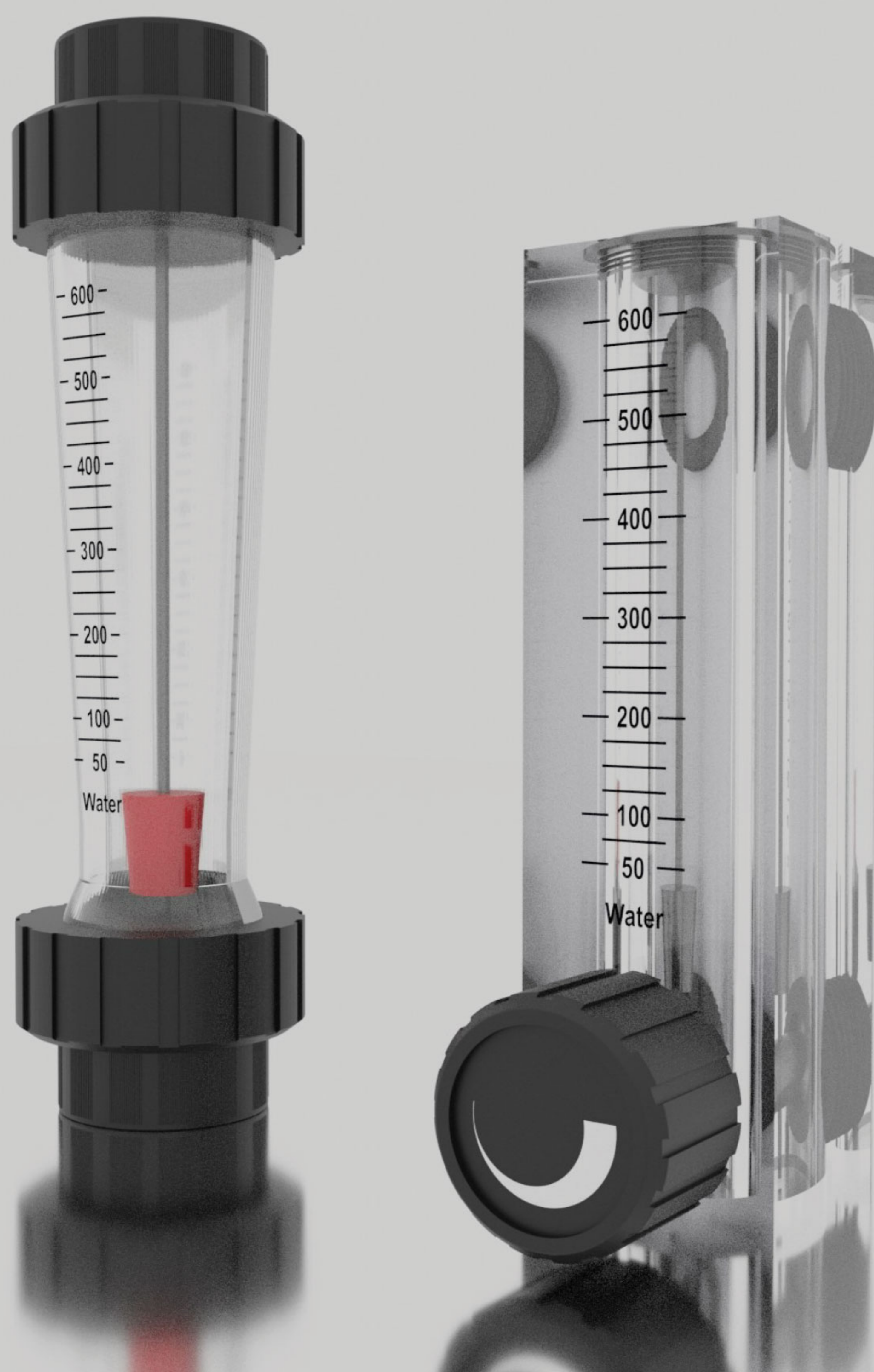


FLOAT FLOWMETER

www.enelsan.com

enelean

We Measure



FLOAT FLOWMETER

FLOAT FLOWMETER

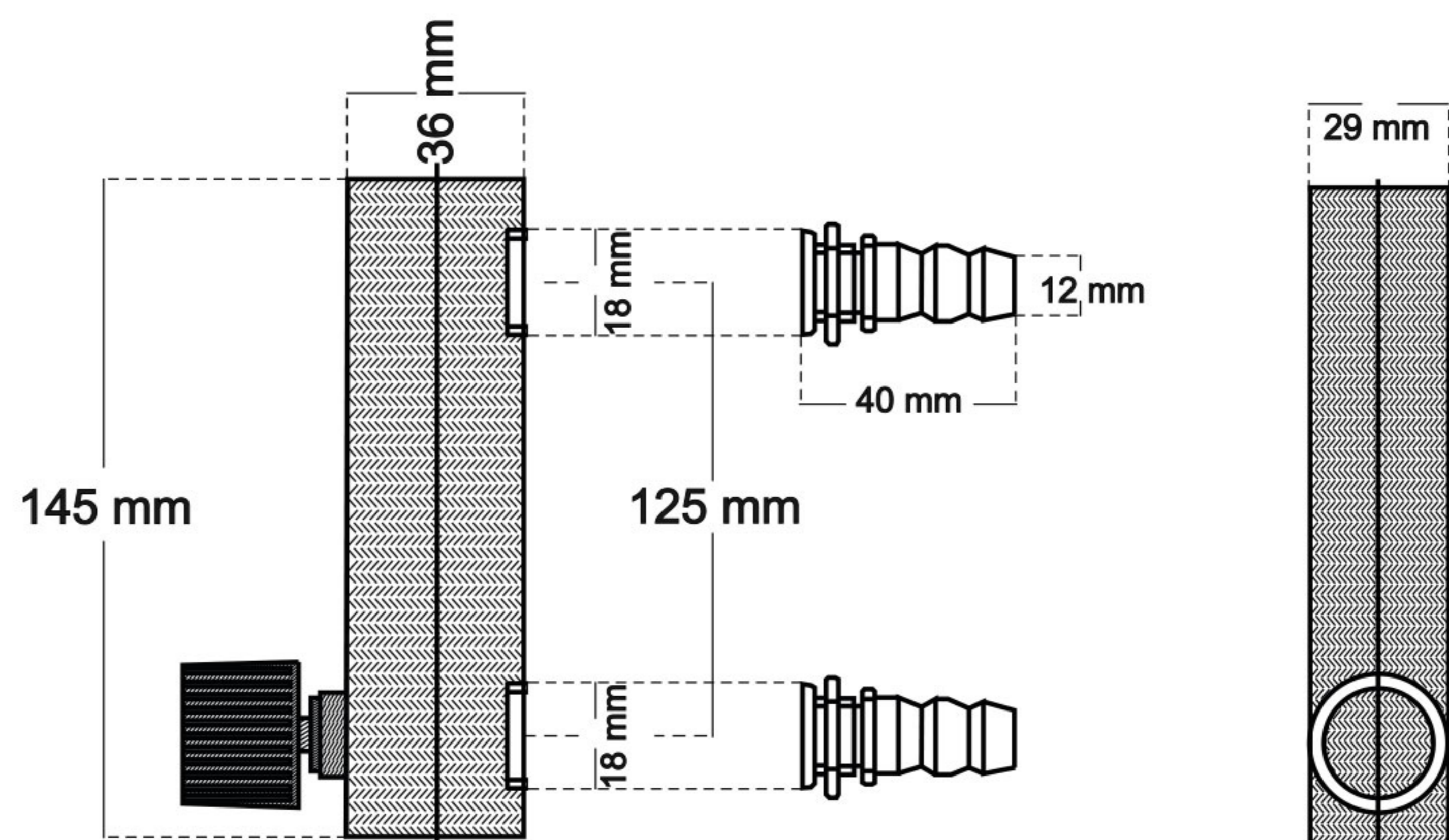
- ▶ This type of float flowmeter is used to precisely measure liquids and gases with low flow rates.
- ▶ It has a metal body and is resistant to impact.
- ▶ It is connected vertically on the line and allows the amount of flow to be measured as it passes from bottom to top.
- ▶ It allows you to make precise flow rate adjustment by means of the adjustment valve. (Provided that constant pressure is maintained.)



Body: SS316
 Measuring Tube: Glass
 O-ring: Viton
 Pressure: 10 Bar Max.
 Temperature: 120 °C
 Precision: %2.5 Full Scale
 Protection: Plexiglass

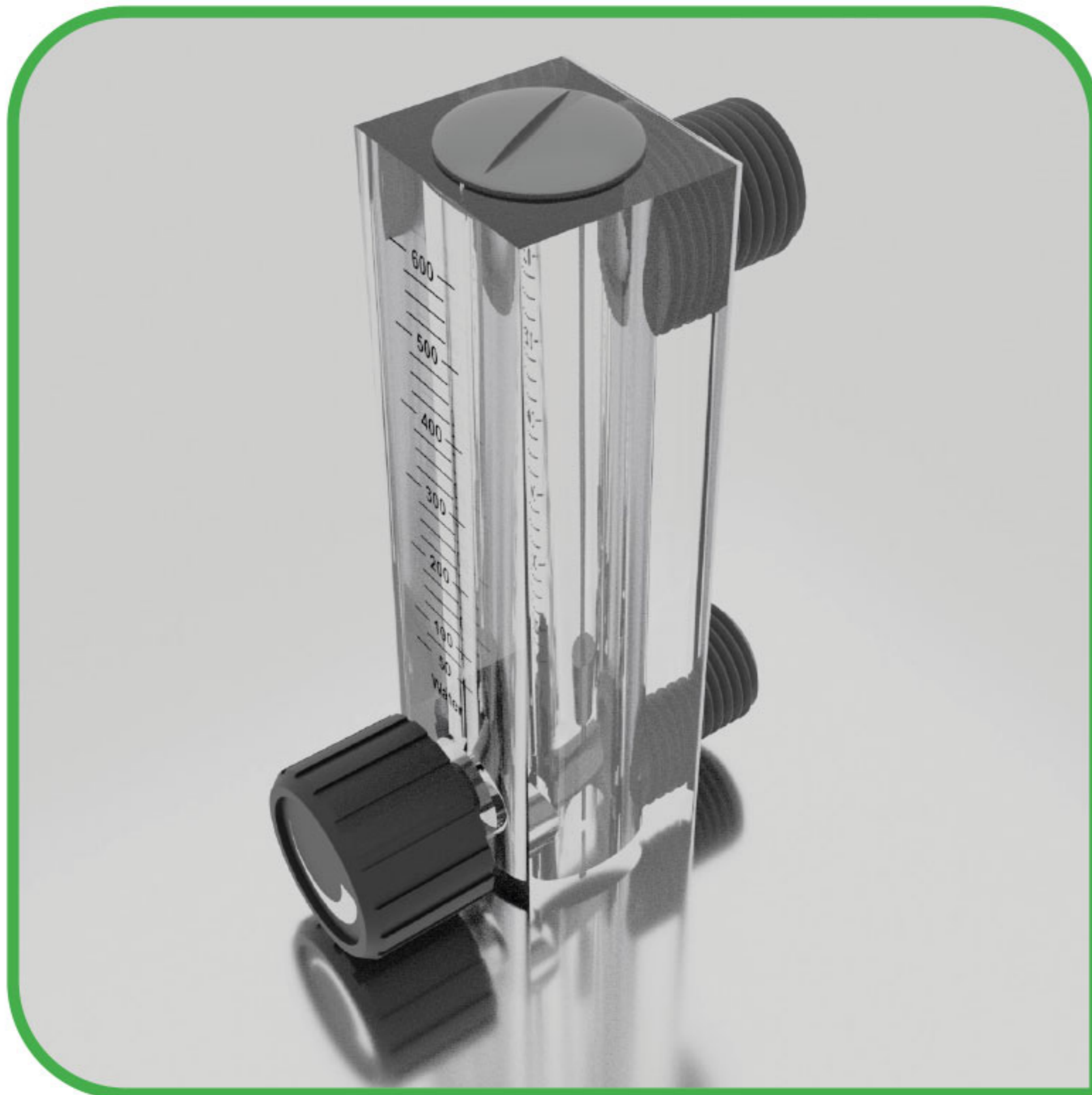


PRODUCT CODE	SCALE	EXPLANATION	CONNECTION
LZB-001.S	0,5 - 5 L/h	Liquid	1/8" or 1/4" BSP
LZB-002.S	1,2 - 12 L/h	Liquid	1/8" or 1/4" BSP
LZB-003.S	2,5 - 25 L/h	Liquid	1/8" or 1/4" BSP
LZB-004.S	4 - 40 L/h	Liquid	1/8" or 1/4" BSP
LZB-005.S	6 - 60 L/h	Liquid	1/8" or 1/4" BSP
LZB-006.S	10 - 100 L/h	Liquid	1/8" or 1/4" BSP
LZB-007.S	12 - 120 L/h	Liquid	1/8" or 1/4" BSP
LZB-008.S	16 - 160 L/h	Liquid	1/8" or 1/4" BSP
LZB-001	6 - 60 L/h	Gas	1/8" or 1/4" BSP
LZB-002	0,5 - 5 L/h	Gas	1/8" or 1/4" BSP
LZB-003	1,6 - 16 L/h	Gas	1/8" or 1/4" BSP
LZB-004	25-250L/h	Gas	1/8" or 1/4" BSP



FLOAT FLOWMETER

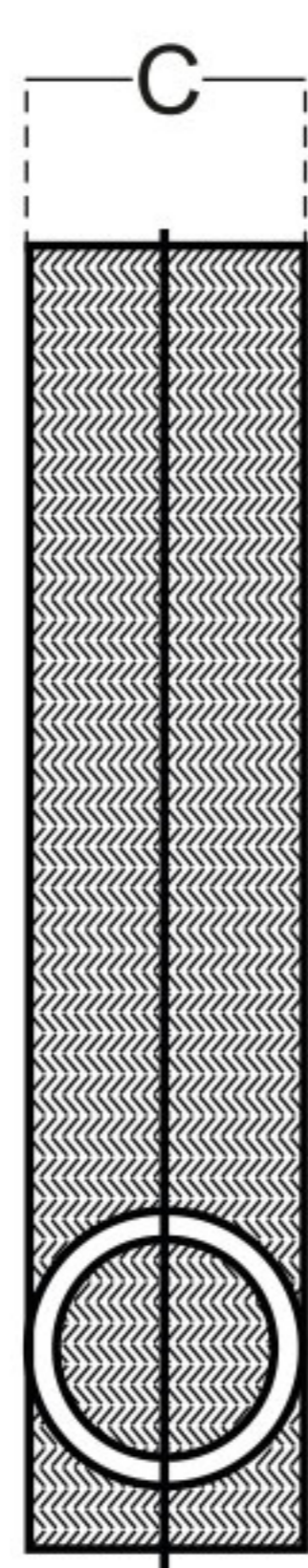
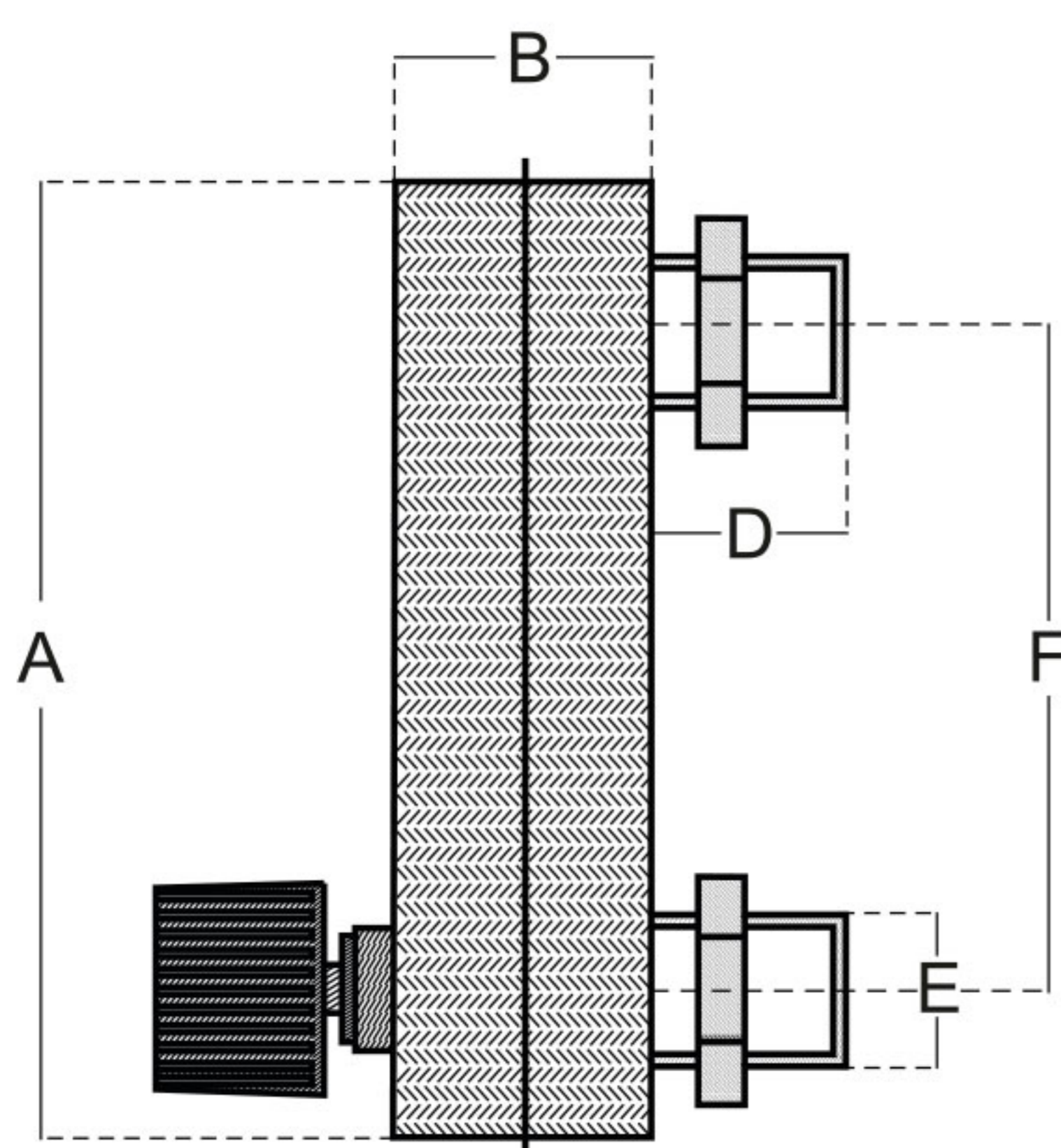
- ▶ This type of float flowmeters are used to measure liquid or gas flow.
- ▶ It has a polypropylene body and is resistant to corrosive fluids to a certain extent.
- ▶ By connecting on the line, it allows the amount of flow to be measured as it passes from bottom to top.
- ▶ It allows you to make precise flow rate adjustment by the adjustment valve. (Provided that constant pressure is fixed)



Connection: From 1/8" until 1"
 Temperature: 0-55 °C
 Pressure: 0- 10 Bar
 Float: Stainless Steel
 Gövde: Polycarbonate; Polypropylene
 Valve: Precision adjustable valve

MODEL	DN (mm)	TECHNICAL DIMENSIONS (mm)					
		A	B	C	D	E	F
LZM - 4T	6	95	28	21	14	12	70
LZM - 6T8T	8	102	33	25	14	18	77
LZM - 15T	15	169	35	32	26	20	128
LZM - 20T	20	228	46	45	28	26	168
LZM - 25T	25	228	46	45	29	32	168

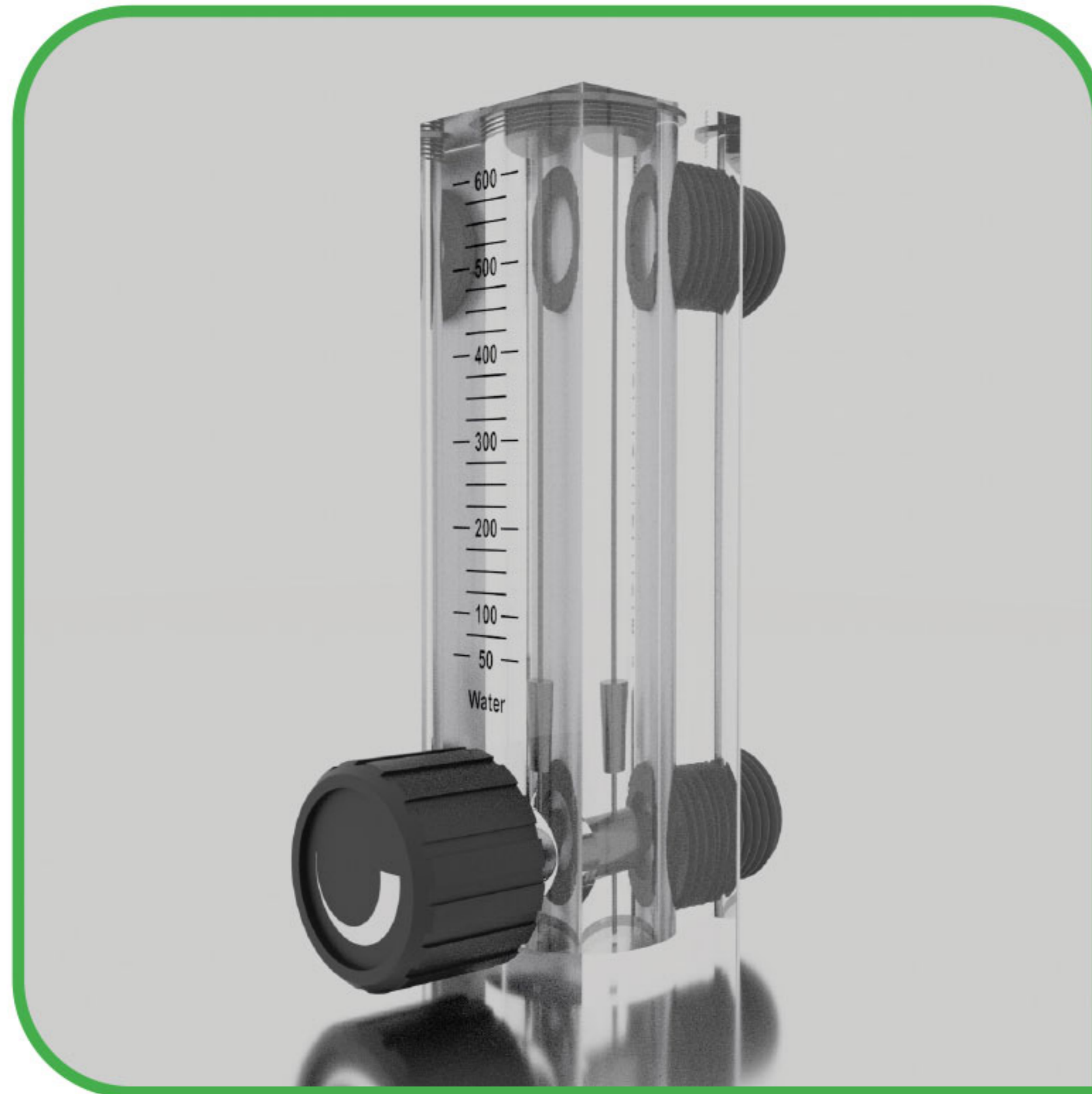
PRODUCT CODE	EXPLANATION	CONNECTION
LZM-4T-S001	6 - 60 ml/min	Klips
LZM-6T-S006	80 - 400ml/min	Klips
LZM-6T-S003	16 - 160ml/min	1/4"
LZM-6T-S004	25 - 25ml/min	1/4"
LZM-6T-S005	100 - 100ml/min	1/4"
LZM-6T -S002	6 - 60 L/h	1/4"
LZM-6T -S008	2 - 20 L/h	1/4"
LZM-6T -S001	2,5 - 25 L/h	1/4"
LZM-8T -S003	2,5 - 25 L/h	1/4"
LZM-8T -S001	2 - 20 L/h	1/4"
LZM-15T-S004	0,5 - 4 L/min	1/2"
LZM-15T -S002	1-7L/min	1/2"
LZM-15T -S001	1 - 11 L/min	1/2"
LZM-15T -S003	2-18L/min	1/2"
LZM-20T -S001	20 - 70 L/min	3/4"
LZM-20T -S002	8 - 80 L/min	3/4"
LZM-25T -S001	12 - 52 L/min	1"
LZM-25T -S004	10 - 100 L/min	1"
LZM-25T -S002	30 - 130 L/min	1"
LZM-25T -S003	30 - 170 L/min	1"



FLOAT FLOWMETER

FLOAT FLOWMETER

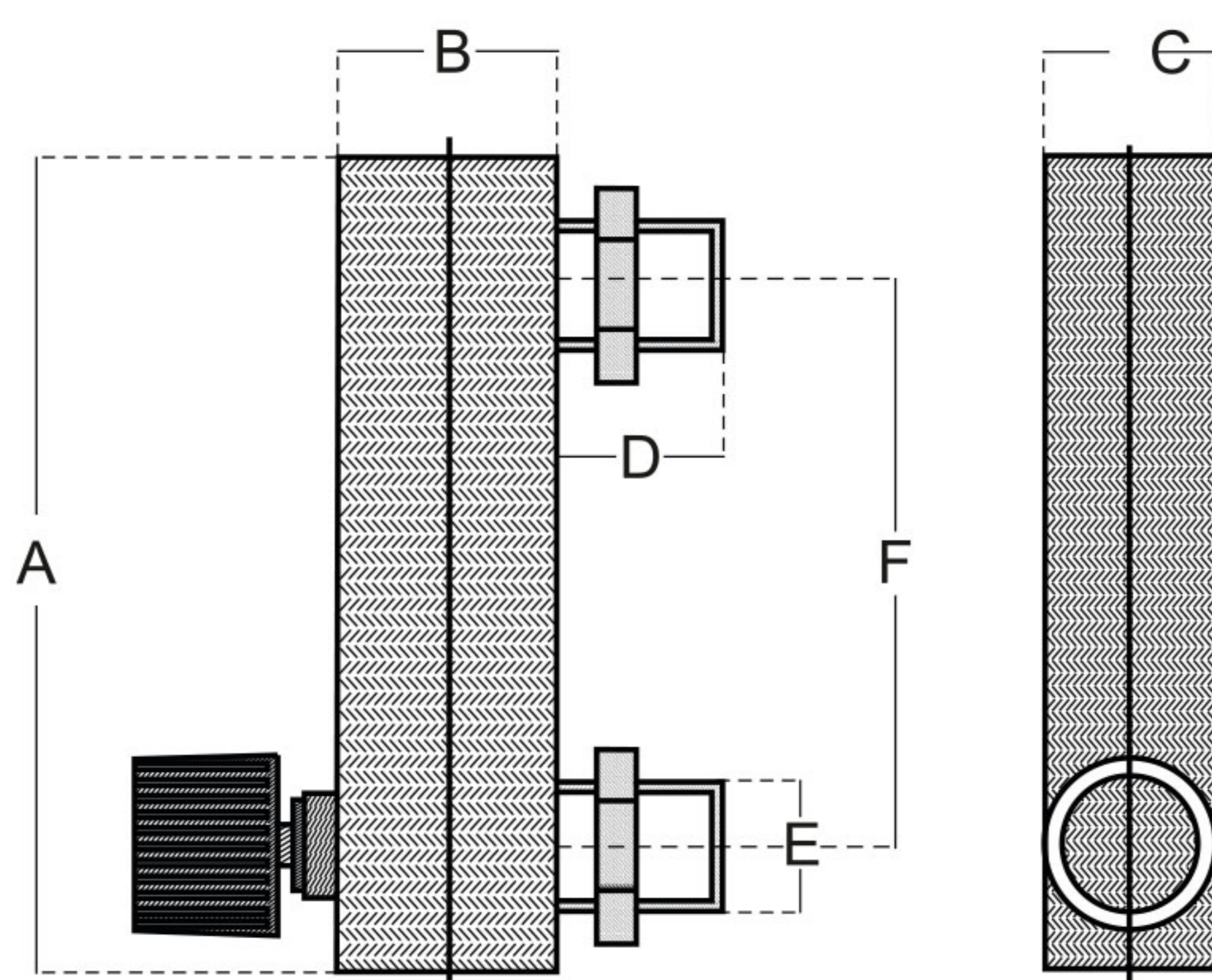
- ▶ This type of Float flow meters is used to detect liquid or gas flow.
- ▶ It has a polypropylene body and is resistant to corrosive fluids to a certain extent.
- ▶ By connecting on the line, it allows the amount of flow to be measured as it passes from bottom to top.
- ▶ It allows you to make precise flow rate adjustment by the adjustment valve. (Provided that constant pressure is fixed)



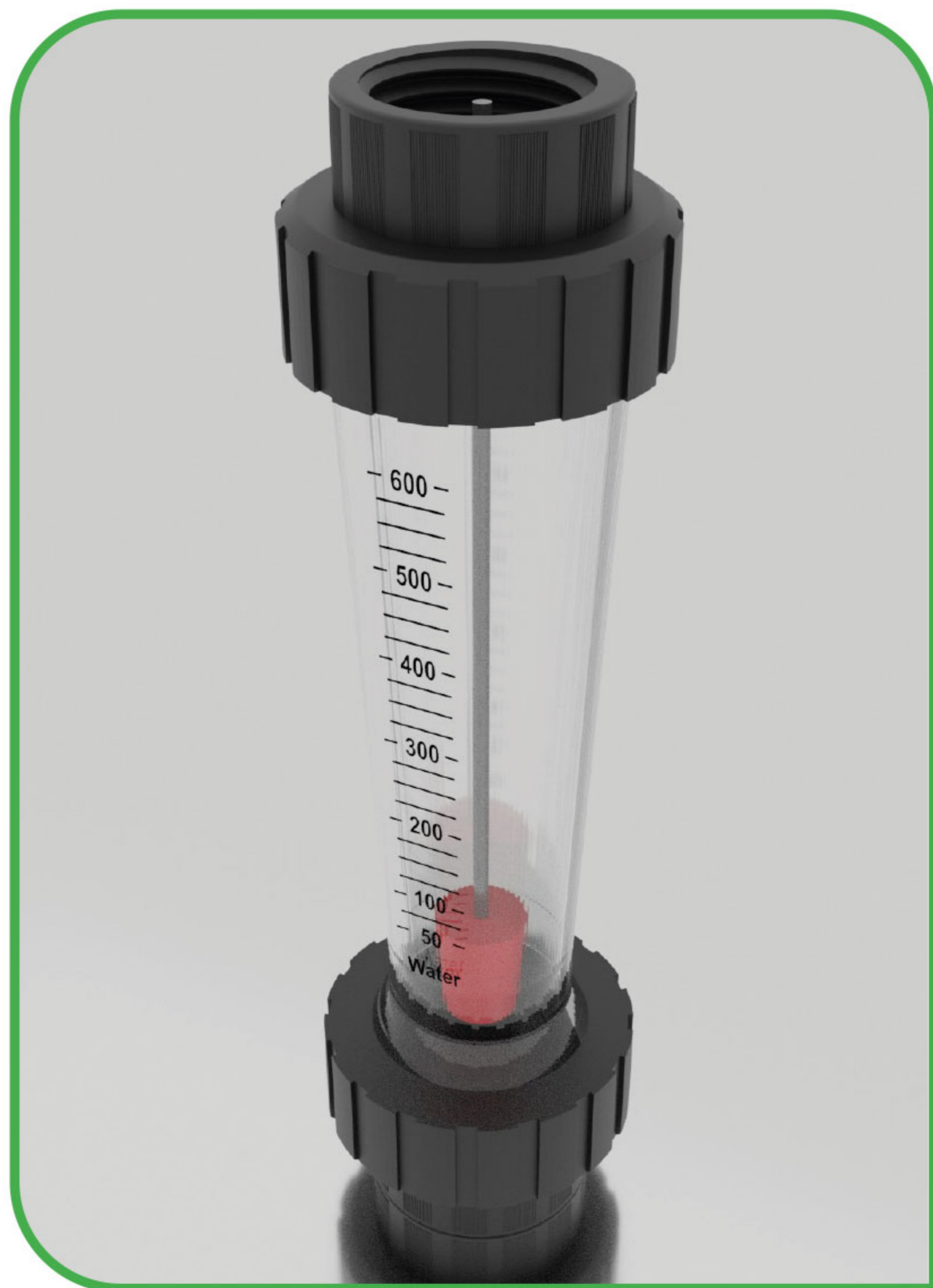
Connection: From 1/8" until 1"
 Temperature: 0-55 °C
 Pressure: 0- 10 Bar
 Float: Stainless Steel
 Body: Polycarbonate; Polypropylene
 Valve: Precision adjustable valve

MODEL	DN (mm)	TECHNICAL DIMENSIONS (mm)					
		A	B	C	D	E	F
LZM - 4T	6	95	28	21	14	12	70
LZM - 6T8T	8	102	33	25	14	18	77
LZM - 15T	15	169	35	32	26	20	128
LZM - 20T	20	228	46	45	28	26	168
LZM - 25T	25	228	46	45	29	32	168

PRODUCT CODE	EXPLANATION	CONNECTION
LZM-4T-H001	0,1 - 1 L/min	Klips
LZM-4T-H003	0,6 - 6 L/min	Klips
LZM-4T-H002	1- 12L /min	Klips
LZM-6T-H007	0,2 - 2 L/min	1/4"
LZM-6T-H006	0,3 - 3 L/min	1/4"
LZM-6T -H001	1- 5 L/min	1/4"
LZM-6T -H002	2 - 10 L/min	1/4"
LZM-6T -H005	3 - 15 L/min	1/4"
LZM-6T -H004	5 - 25 L/min	1/4"
LZM-6T-H003	6 - 30 L/min	1/4"
LZM-15T-H003	0,1 - 1 m3/h	1/2"
LZM-15T-H004	0,6-6 m3/h	1/2"
LZM-15T-H001	1 - 10 m3/h	1/2"
LZM-15T-H006	1,6-16 m3/h	1/2"
LZM-15T-H005	2,5 -25 m3/h	1/2"
LZM-15T -H002	4 - 40 m3/h	1/2"
LZM-20T -H003	6 - 60 m3/h	3/4"
LZM-20T-H002	7 - 70 m3/h	3/4"
LZM-20T-H004	25 - 250 m3/h	3/4"
LZM-25T-H001	6 - 60 m3/h	1"
LZM-25T-H004	10 - 100 m3/h	1"
LZM-25T-H002	25 - 250 m3/h	1"
LZM-25T-H003	30 - 300 m3/h	1"

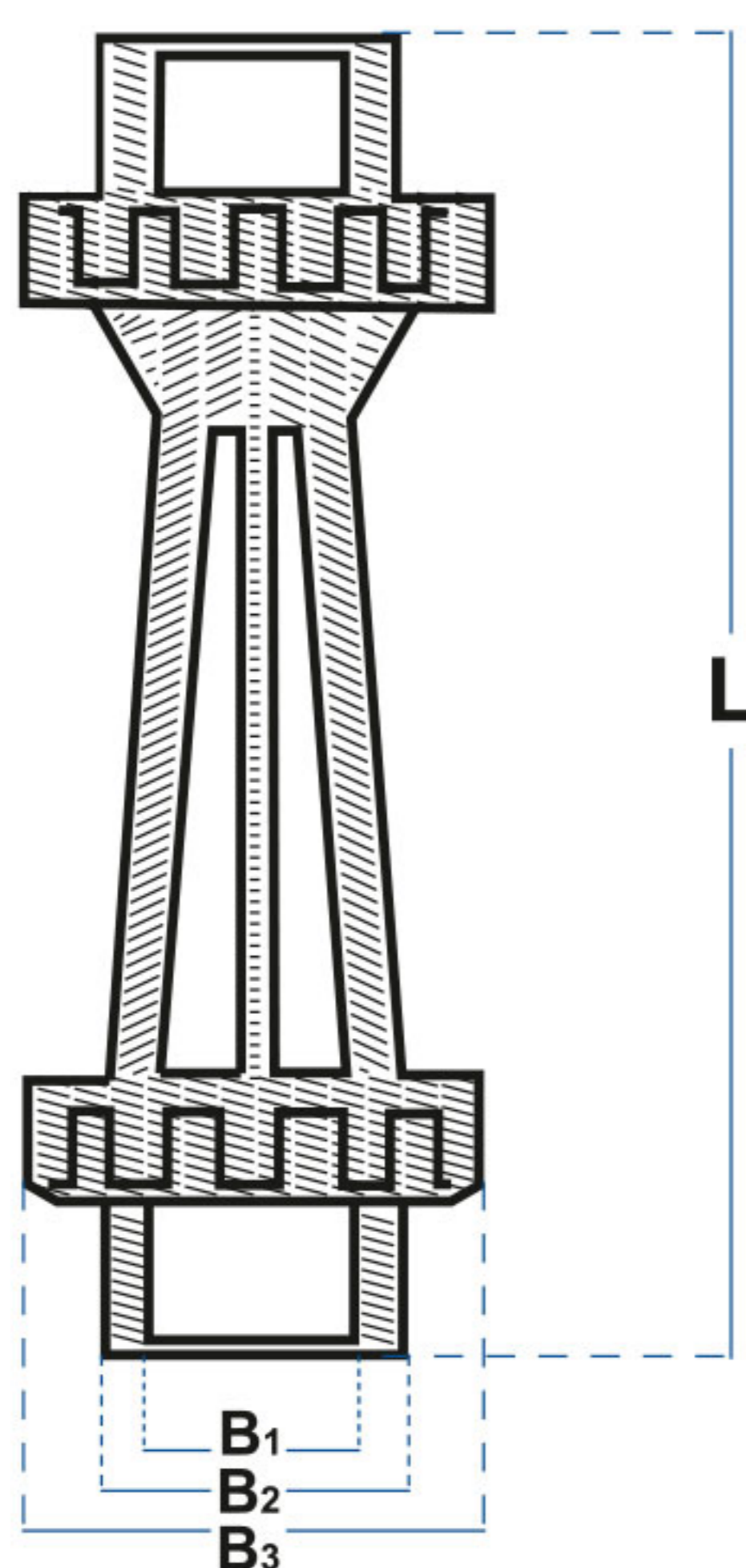


FLOAT FLOWMETER



- ▶ This type of Float flowmeters are used to detect liquid flow.
- ▶ It has a PVC body and is resistant to corrosive fluids.
- ▶ By connecting on the line, it allows the amount of flow to be measured as it passes from bottom to top.

Body: Triamide
 O-ring: Viton
 Max. Pressure: 10 Bar Max.
 Temp.: 70 °C
 Precision: %3 Full Scale
 Bağlantı: From 1/2" until 2½"
 Height: From 200mm until 430mm



PRODUCT CODE	EXPLANATION	CONNECTION
LZS-15-001	5 - 50 L/h	1/2"
LZS-15 -002	10 - 100 L/h	1/2"
LZS-15 -007	16 - 160 L/h	1/2"
LZS-15 -005	25 - 250 L/h	1/2"
LZS-15 -003	40 - 400 L/h	1/2"
LZS-15 -004	60 - 600 L/h	1/2"
LZS-15 -006	100 - 1000 L/h	1/2"
LZS-25 -001	100 - 1000 L/h	3/4"
LZS-25-004	160 - 1600 L/h	3/4"
LZS-25-003	250 - 2500 L/h	3/4"
LZS-25-002	300 - 3000 L/h	3/4"
LZS-32-002	0,4 - 4 m3/h	1"
LZS-32-001	0,6 - 6 m3/h	1"
LZS-50-003	0,4 - 4 m3/h	1 1/2"
LZS-50-004	0,6 - 6 m3/h	1 1/2"
LZS-50-001	1 - 10 m3/h	1 1/2"
LZS-50-002	1,6 - 16 m3/h	1 1/2"
LZS-65-004	7 - 25 m3/h	2"
LZS-65-005	10 - 40 m3/h	2"
LZS-65-003	12 - 60 m3/h	2"

MODEL	DN (mm)	TECHNICAL DIMENSIONS (mm)			
		L	B1	B2	B3
LZS - 15	15	130	20	26	50
LZS - 25	20	230	24	38	60
LZS - 32	25	290	30	48	73
LZS - 50	40	350	45	73	98
LZS - 65	50	440	56	88	123
LZS - 100	100	547	Hole Size 180 mm 8-Ø18		
LZS - 125	125	547	Hole Size 1210 mm 8-Ø18		
LZS - 150	150	547	Hole Size 1240 mm 8-Ø18		

FLOAT FLOWMETER

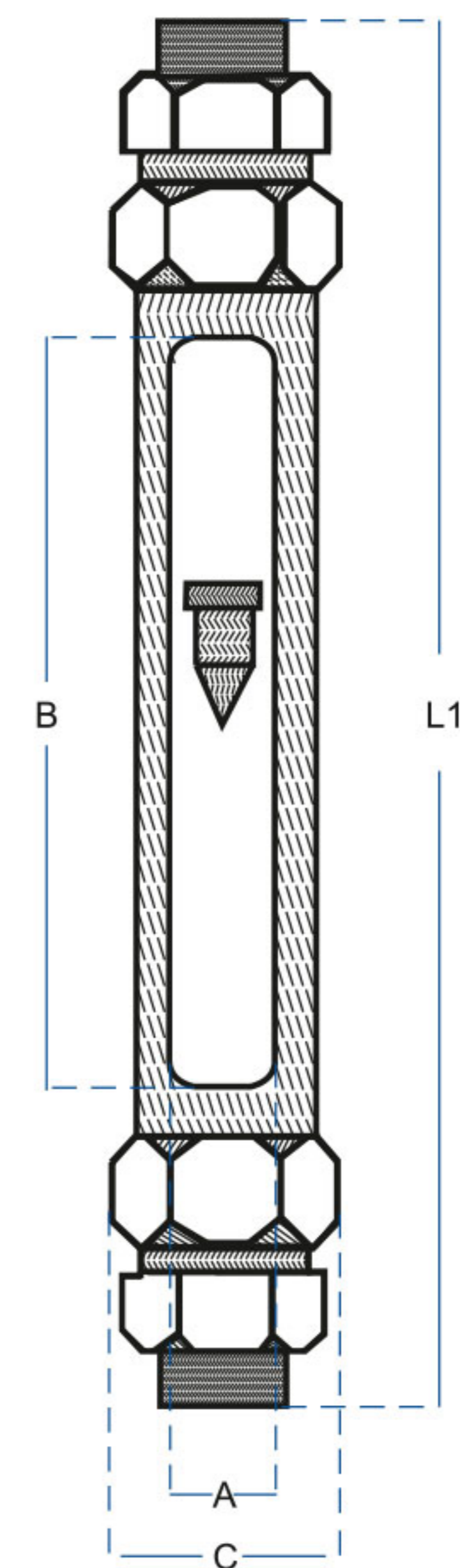
FLOAT FLOWMETER



- ▶ This type of float flowmeter is used to measure the flow of high temperature gases. It has a metal body and is resistant to impact.
- ▶ By connecting vertically, it allows to measure the amount of flow when the fluid passes from the bottom to the top.

O-ring: Viton
 Precision: %1 Full Scale
 Maks. Temp: 120 °C
 Maks. Pressure: 10 Bar
 Float: Stainless Steel
 Body: Epoxy coated stainless steel
 Float Stopper: PTFE

DN (mm)	Indicator axb	Connection Dimensions (mm)			
		L1	C	Thread	Weight (kg)
15	26*230	408	53	1/2" FNPT BSP 1/2"	1
25	26*230	414	75	1" FNPT BSP 1"	1.8
40	40*230	428	92	1 1/2" FNPT BSP 1 1/2"	3.7
50	50*230	431	116	2" FNPT BSP 2"	5.9



PRODUCT CODE	EXPLANATION	CONNECTION
VA-15-011	0,12 - 1,2 m3/h	1/2"
VA-15-008	0,2 - 2 m3/h	1/2"
VA-15-009	0,3 - 3 m3/h	1/2"
VA-15-010	0,5 - 5 m3/h	1/2"
VA-15-012	0,8 - 8 m3/h	1/2"
VA-25-002	2 - 20 m3/h	1"
VA-25-003	3 - 30 m3/h	1"

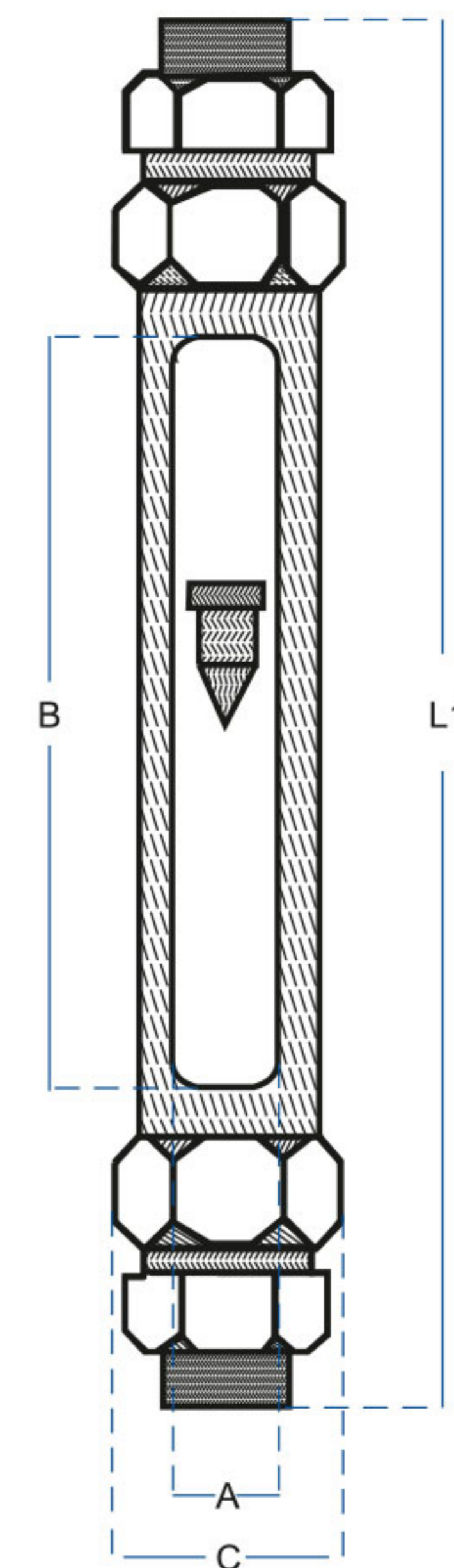
FLOAT FLOWMETER



- ▶ This type of float flowmeter is used to measure the flow of liquids with high temperature. It has a metal body and is resistant to impact.
- ▶ By connecting vertically, it allows to measure the amount of flow when the fluid passes from the bottom to the top.

O-ring: Viton
 Precision: %1 Full Scale
 Max. Temp.: 120 °C
 Max. Pressure: 10 Bar
 Float: Stainless Steel
 Body: Epoxy coated stainless steel
 Float Stopper: PTFE

PRODUCT CODE	EXPLANATION	CONNECTION
VA-15-001	4 - 40 L/h	1/2"
VA-15-002	6,3 - 63 L/h	1/2"
VA-15-003	10 - 100 L/h	1/2"
VA-15-004	16 - 160 L/h	1/2"
VA-15-005	25 - 250 L/h	1/2"
VA-15-006	40 - 400 L/h	1/2"
VA-15-007	63 - 630 L/h	1/2"
VA-25-001	63 - 630 L/h	1"
VA-25-004	100 - 1000 L/h	1"
VA-25-006	160 - 1600 L/h	1"
VA-25-005	250 - 2500 L/h	1"
VA-25-009	400 - 4000 L/h	1"



DN (mm)	Indicator axb	Connection Dimensions (mm)			
		L1	C	Thread	Weight (kg)
15	26*230	408	53	1/2" FNPT BSP 1/2"	1
25	26*230	414	75	1" FNPT BSP 1"	1.8
40	40*230	428	92	1 1/2" FNPT BSP 1 1/2"	3.7
50	50*230	431	116	2" FNPT BSP 2"	5.9

